

# SPACE

**DIRECTIONS:** Step 1

Look under each box for directions on whether you should draw part of the landscape in the foreground, middleground or background.

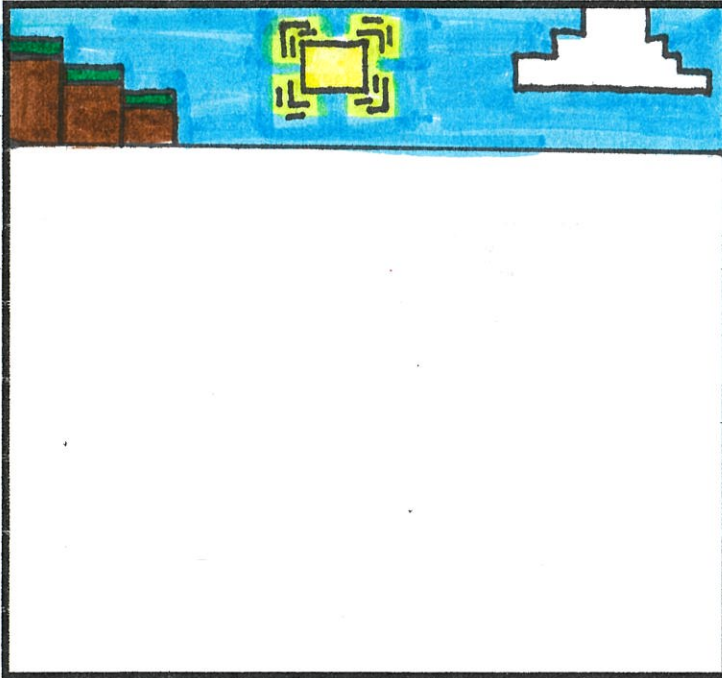
Step 2

Then add people. Remember size and placement.

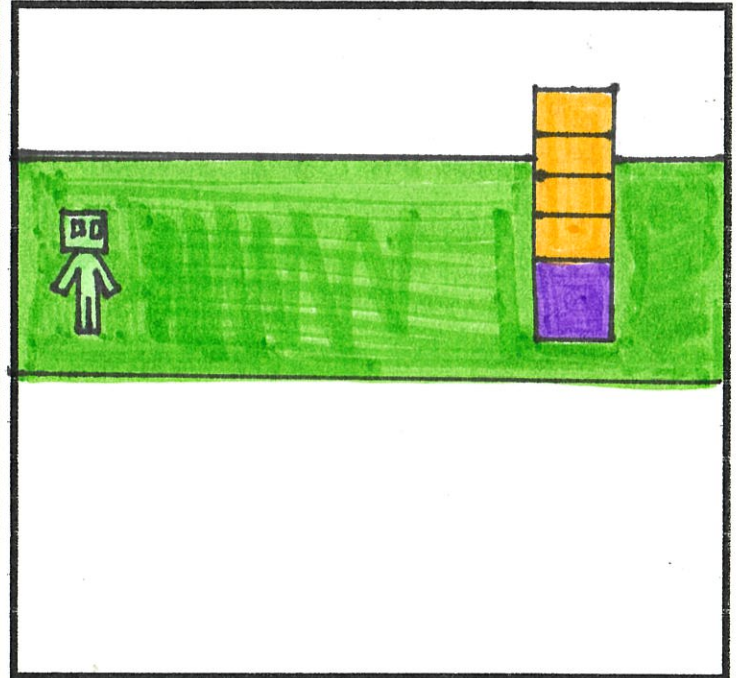
Step 3

In the last box, combine all 3 drawings into 1 complete picture.

\* If you don't understand, look on the back for a clue . . .BUT DON'T COPY!!!



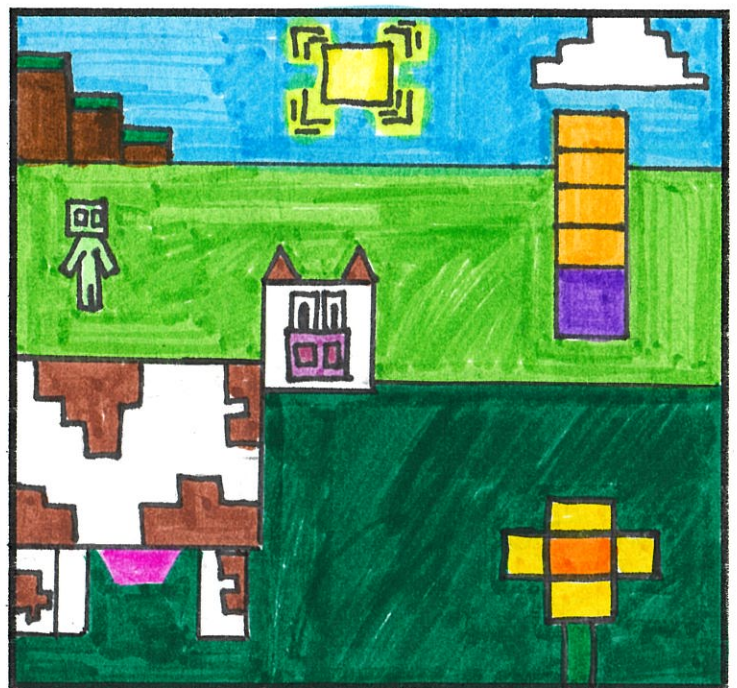
**BACKGROUND**



**MIDDLEGROUND**



**FOREGROUND**



**TOTAL PICTURE**

Well Done !! Can I hang up ???



Due 4-17

Timothy Ford

# SPACE

## DIRECTIONS: Step 1

Look under each box for directions on whether you should draw part of the landscape in the foreground, middleground or background.

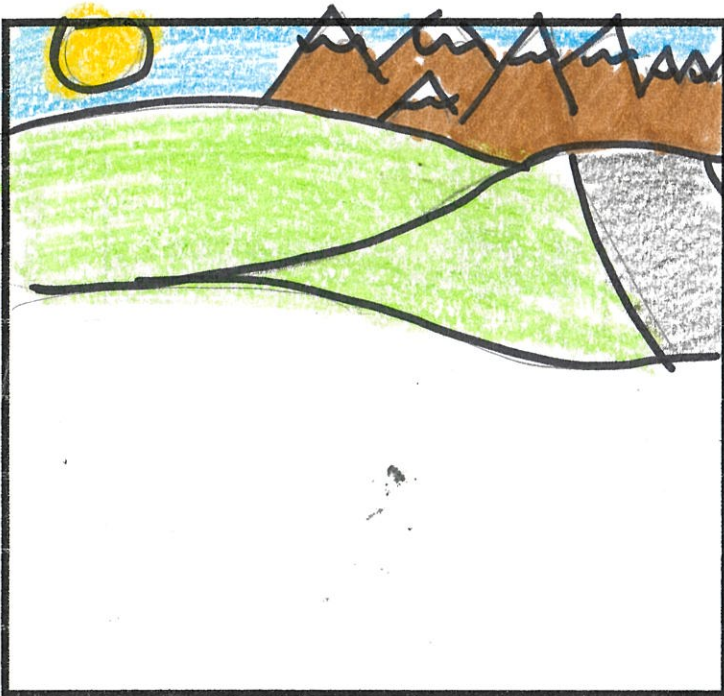
## Step 2

Then add people. Remember size and placement.

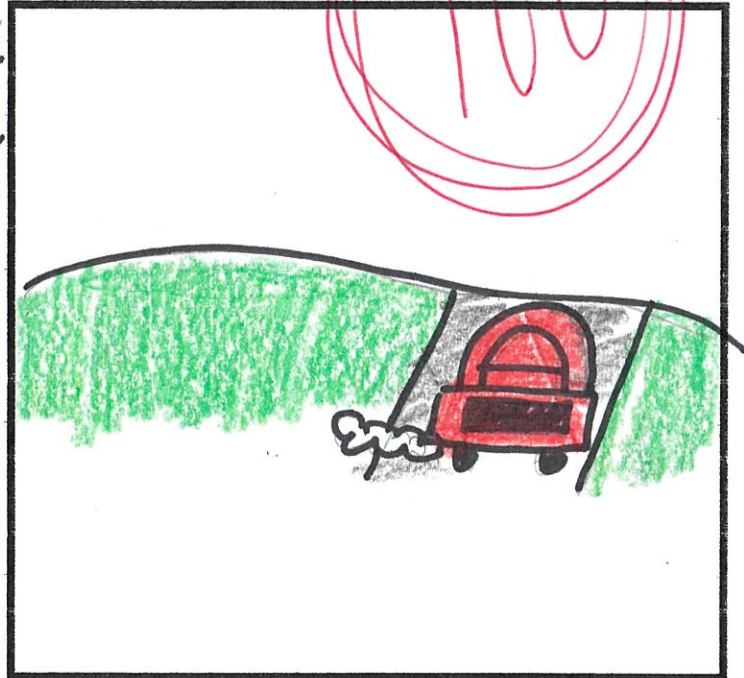
## Step 3

In the last box, combine all 3 drawings into 1 complete picture.

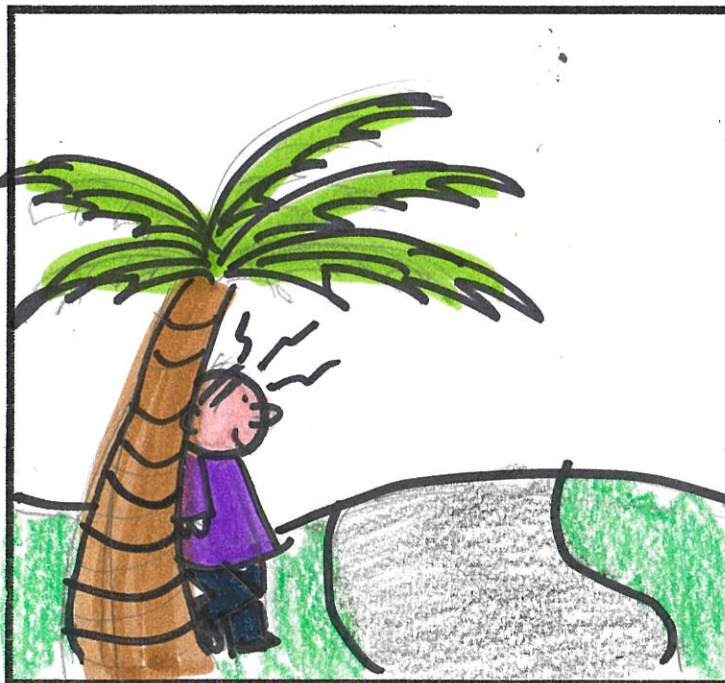
\* If you don't understand, look on the back for a clue . . . **BUT DON'T COPY !!!**



**BACKGROUND**



**MIDDLEGROUND**



**FOREGROUND**



**TOTAL PICTURE**

*Can I hang up??*



# SPACE

## DIRECTIONS: Step 1

Look under each box for directions on whether you should draw part of the landscape in the foreground, middleground or background.

## Step 2

Then add people. Remember size and placement.

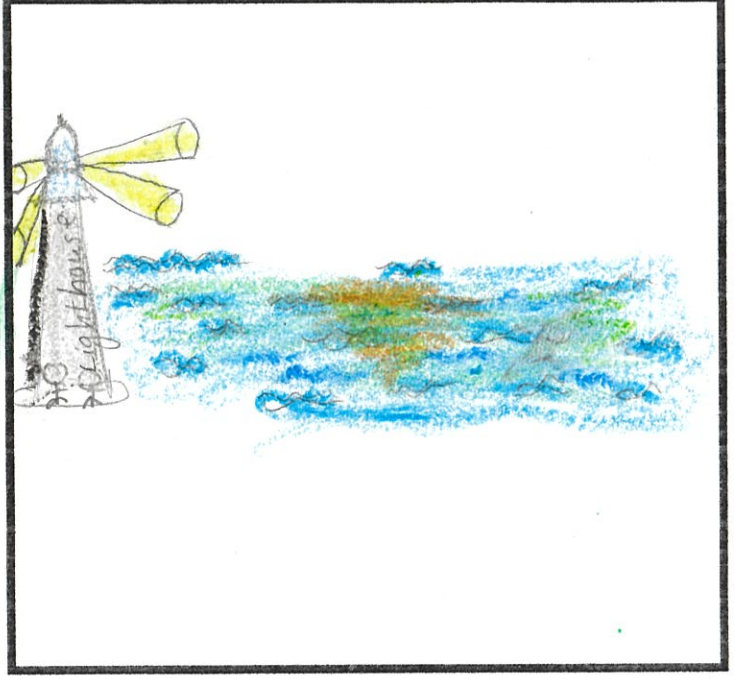
## Step 3

In the last box, combine all 3 drawings into 1 complete picture.

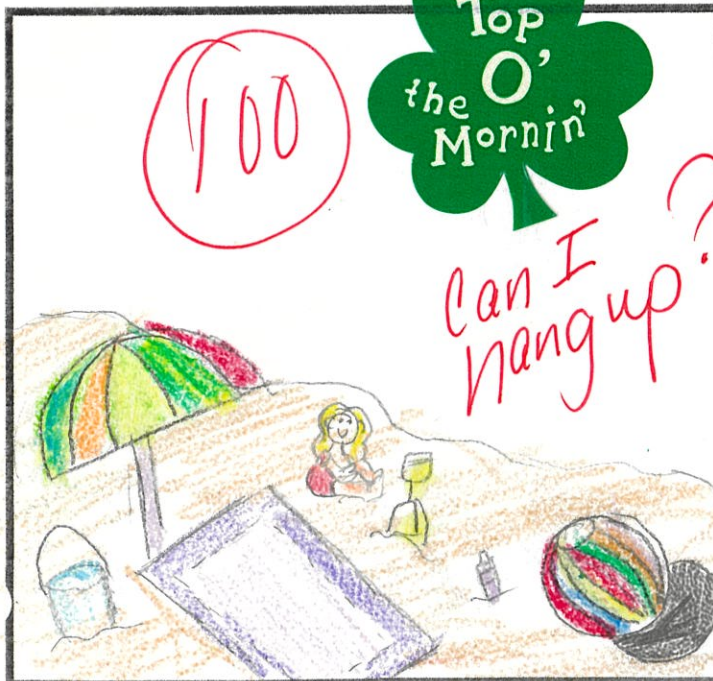
\* If you don't understand, look on the back for a clue . . . BUT DON'T COPY !!!



**BACKGROUND**



**MIDDLEGROUND**



**FOREGROUND**



**TOTAL PICTURE**



# SPACE

Total pic in parts - color

## DIRECTIONS: Step 1

Look under each box for directions on whether you should draw part of the landscape in the foreground, middleground or background.

## Step 2

Then add people. Remember size and placement.

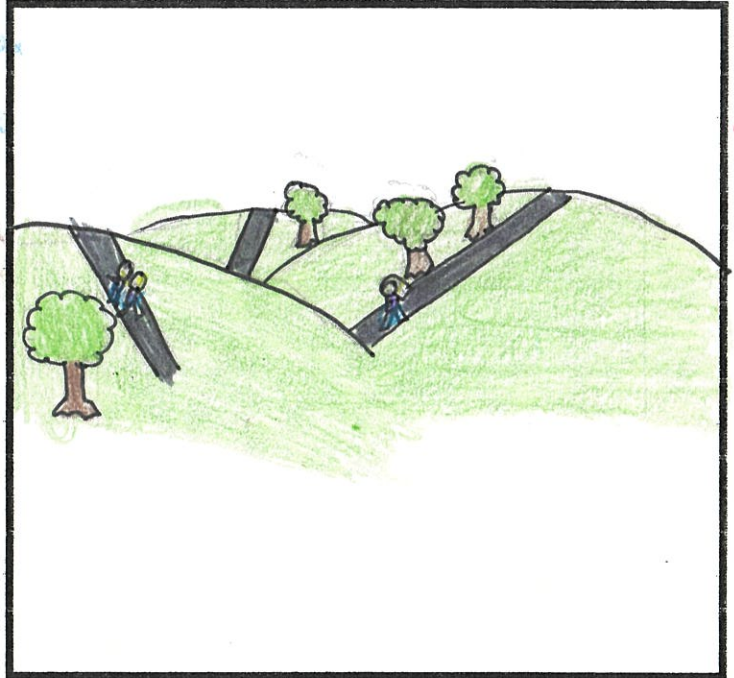
## Step 3

In the last box, combine all 3 drawings into 1 complete picture.

\* If you don't understand, look on the back for a clue . . . BUT DON'T COPY !!!



**BACKGROUND**



**MIDDLEGROUND**



**FOREGROUND**



**TOTAL PICTURE**

Well done !!

Can I have up?